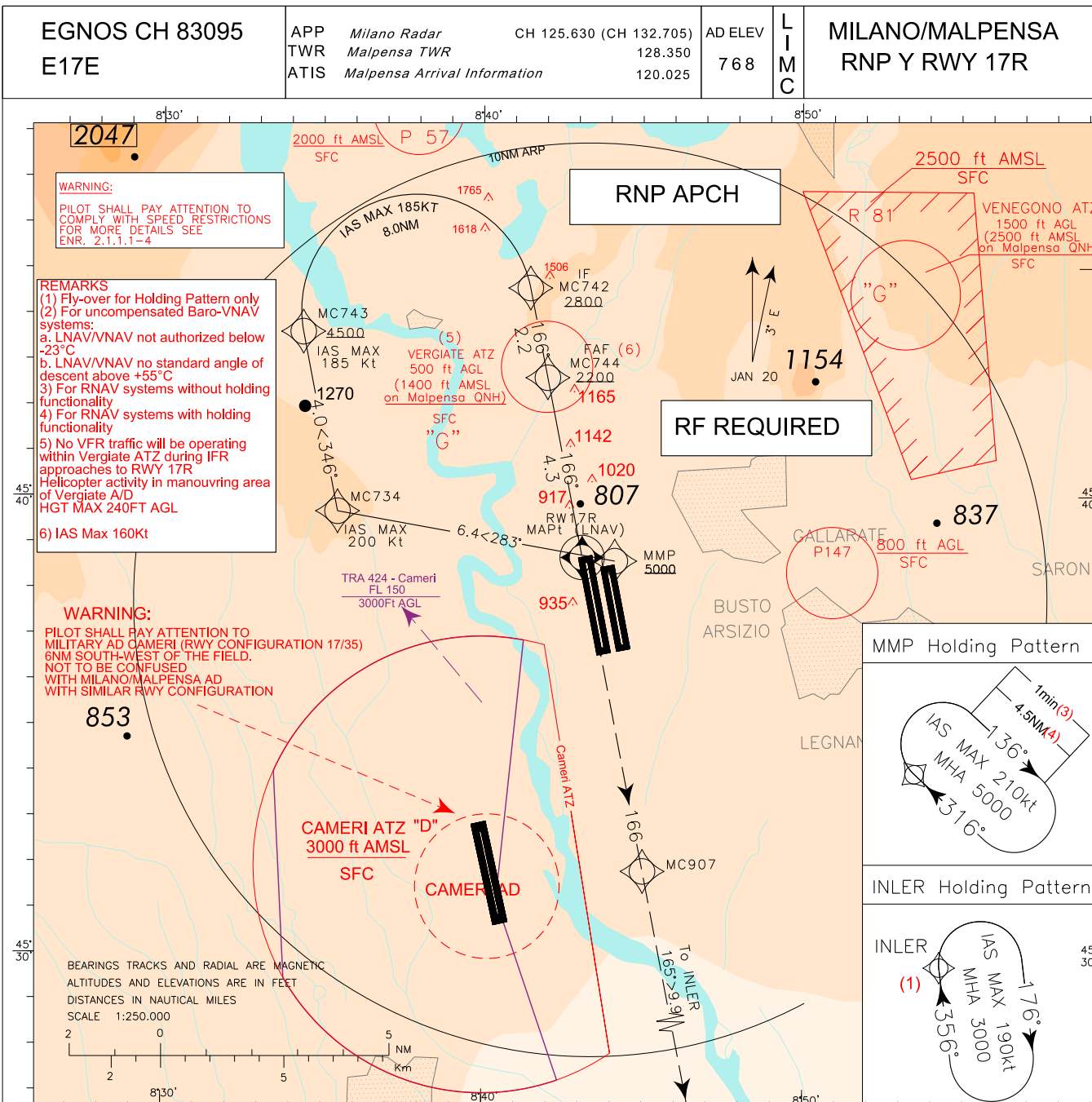
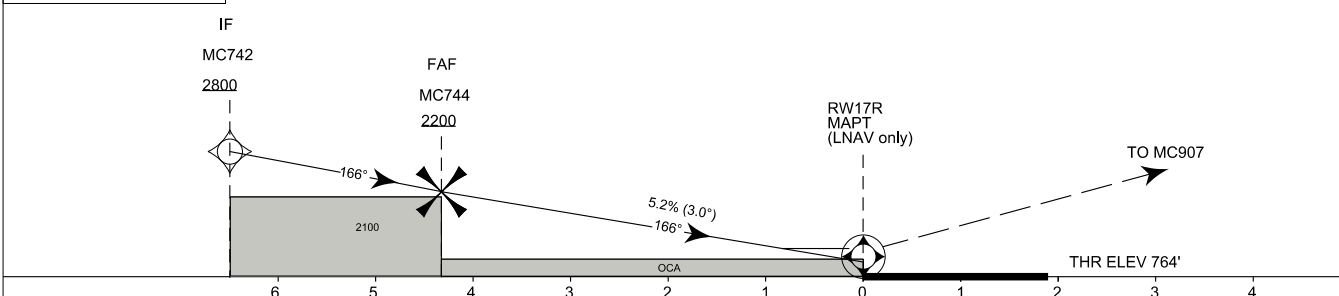


DOC 8168 - ED 6 2014 AMD 8

CHANGE: MAGNETIC VARIATION UPDATED



TRANSITION ALT 6000	MISSED APPROACH: Climbing to 3000FT, continue to MC907 on course 166° then proceed to INLER to join Missed Approach Holding Pattern
TCH 15 M	



STRAIGHT IN APPROACH	OCA (OCH)	A	B	C	D	FT PER MIN	GS	FAF - MAPt	RWY17R DIST.	ALT (HGT)	MNM SECT ALT 25NM ARP <b>10300</b>
	LPV	1047 (283)	1059 (295)	1067 (303)	1078 (314)	1000	180	1 : 26	3.0	1770 (1006)	
	LNAV/VNAV	1150 (386)	1162 (398)	1170 (406)	1181 (417)	880	160	1 : 37	2.0	1450 (686)	
	LNAV	1420 (646)				770	140	1 : 51	1.0	1130 (366)	
						660	120	2 : 09			
						550	100	2 : 34			
						440	80	3 : 14			

## TABULAR DESCRIPTION

## RNP Y RWY 17R - Instrument Approach Procedure

Serial Number	Path Terminator	Waypoint Identifier	Fly Over	Course °M(°T)	Magnetic Variation	Distance (NM)	Turn Direction	Altitude (ft)	Speed Limit (kt)	VPA (°)/TCH (m)	Navigation Specification
010	IF	MMP	-	-	-	-	-	+5000	-	-	RNP APCH
020	TF	MC734	-	283 (286.2)	-	6.4	-	-	200	-	RNP APCH
030	TF	MC743	-	346 (349.0)	-	4.0	-	+4500	185	-	RNP APCH
040	RF Centre: MC003 R=2.53NM	MC742	-	-	-	-	R	+2800	185	-	RNP APCH
050	TF	MC744	-	166 (169.0)	-	2.2	-	+2200	160	-	RNP APCH
060	-	RW17R	Y	166 (169.0)	-	4.3	-	-	-	3.0/ 15.0	RNP APCH
070	CF	MC907	-	166 (169.0)	3	-	-	-	-	-	RNP APCH
080	TF	INLER	-	165 (167.8)	-	9.9	-	+3000	190	-	RNP APCH

Path Terminator	Waypoint Identifier	Inbound Course °M (°T)	Leg Distance (NM) (1)	Timing(min.)/ Waypoint Distance (NM) (2)	Turn Direction	Minimum Altitude (FT)	Maximum Altitude (FL)	Speed Limit (kt)	Magnetic Variation (°)	Navigation Specification
HM	INLER	356 (359.0)	3.5	1/-	R	+3000	-	190	3	RNAV1
HM	MMP	316 (319.0)	4.5	1/-	R	+5000	-	210	3	RNAV1

(1) RNAV system with holding functionality

(2) RNAV system without holding functionality

## WAYPOINT LIST

Waypoint Identifier	Coordinates
MC734	45°40'13.17"N – 008°35'20.63"E
MC743	45°44'08.73"N – 008°34'15.48"E
MC742	45°45'06.77"N – 008°41'21.24"E
MC744	45°42'57.96"N – 008°41'57.01"E
MC907	45°31'51.42"N – 008°45'01.41"E
Arc Centre Identifier	Coordinates
MC003	45°44'37.82"N – 008°37'48.45"E

## SBAS FAS DATA BLOCK LIMC RNP Y RWY 17R

## Input data

Operation Type	0
SBAS Provider	1 (EGNOS)
Airport Identifier	LIMC
Runway	17
Runway Letter	1 (Right)
Approach Performance Designator	0
Route Indicator	Y
Reference Path Data Selector	0
Reference Path Identifier	E17E
LTP/FTP Latitude	453843.6325N
LTP/FTP Longitude	0084307.4120E
LTP/FTP Ellipsoidal Height (metres)	278.5
FPAP Latitude	453638.9885N
Delta FPAP Latitude (seconds)	-124.6440
FPAP Longitude	0084341.8485E
Delta FPAP Longitude (seconds)	34.4365
Threshold Crossing Height	15.0
TCH Units Selector	1 (meters)
Glidepath Angle (degrees)	3.00
Course Width (metres)	105.00
Length Offset (metres)	0
HAL (metres)	40.0
VAL (metres)	35.0

## Output data

Data Block	10 03 0D 09 0C 51 C8 00 05 37 31 05 61 C2 96 13 28 DE BD 03 E1 1E 38 32 FC 09 0D 01 2C 81 2C 01 64 00 C8 AF C8 76 17 5A
Calculated CRC Value	C876175A

## Required Additional Data

ICAO Code	LI
LTP/FTP Orthometric Height (metres)	233.0

Intenzionalmente bianca

*Intentionally left blank*